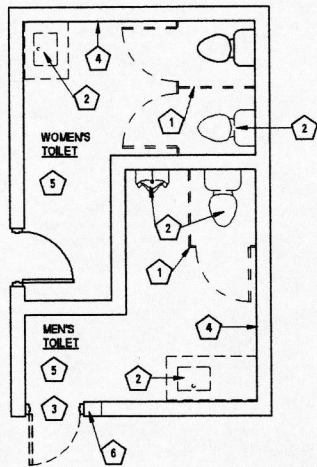


Restroom Project

Maintenance Committee has been working on acquiring estimates to renovate the two bathrooms in the basement, next to the kitchen. The current men's restroom would become an all gender restroom meeting ADA requirements, while the current women's restroom would remain, with replacement of stall partitions, toilets (one child level, one standard height), and sink/vanity.

An estimate was received from only ONE contractor, Lee Cowan. Flooring would be provided by a separate contractor and the congregation would provide vanities, toilets, and partitions as well as paint and painting time. Drawings of the proposed renovations and a list of costs are included at the end of this report.

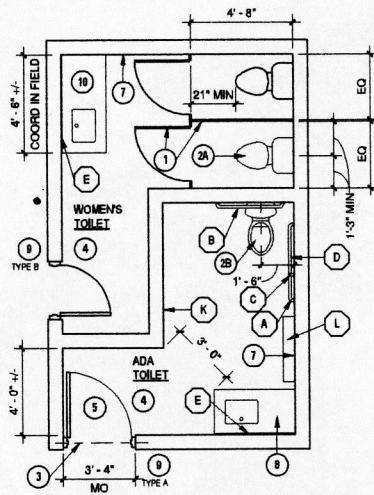
Vendor	Item	Cost
Lee Cowan, contractor	Labor for ADA restroom	\$ 3,122.64
	Material for ADA restroom	\$ 1,584.80
Lemont Flooring	Armstrong 12x12 tile	\$ 1,138.00
Bi-Lo Supply	Mansfield ADA toilet, tank, seat	\$ 179.00
	ADA sink	\$ 72.50
?	Baby changing table	\$ 200.00
?	Vanity	\$ 350.00
	Paint estimate	\$ 125.00
		\$ 6,771.94
Lee Cowan, contractor	Labor women's restroom	\$ 1,794.51
	Material for women's rstmr	\$ 123.20
Lemont Flooring	Armstrong 12x12 tile	\$ 1,138.00
Bi-Lo Supply	Std. round toilet,tank, seat	\$ 147.00
	Elementary round toilet/tank	\$ 257.00
Crescent Supply	Metal Partition and stall doors	\$ 1,044.00
?	Paint	\$ 84.00
?	Vanity and sink	\$ 450.00
		\$ 5,037.71
		\$ 6,771.94
		\$ 5,037.71
		\$ 11,809.65



3 DEMO FLOOR PLAN
A101 SCALE: 1/4" = 1'-0"

NUMBERED DEMOLITION NOTES

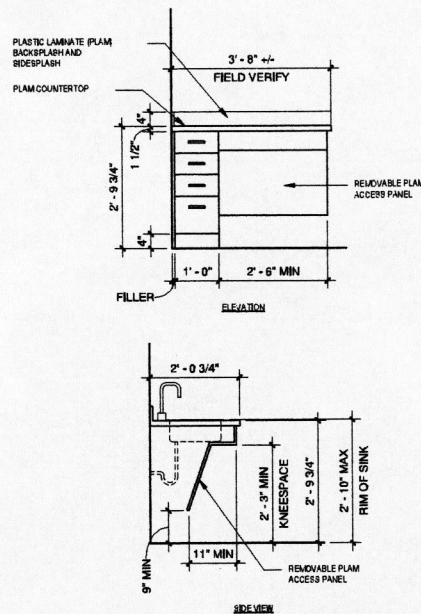
- 1 REMOVE TOILET PARTITIONS
- 2 REMOVE PLUMBING FIXTURE
- 3 REMOVE DOOR AND FRAME
- 4 REMOVE BASEBOARD HEATER
- 5 REMOVE TOILET ACCESSORIES
- 6 REMOVE CMU FOR NEW MASONRY OPENING; EXISTING OVERSIZED MASONRY LINTEL TO REMAIN.



4 FLOOR PLAN
A101 SCALE: 1/4" = 1'-0"

NUMBERED CONSTRUCTION NOTES

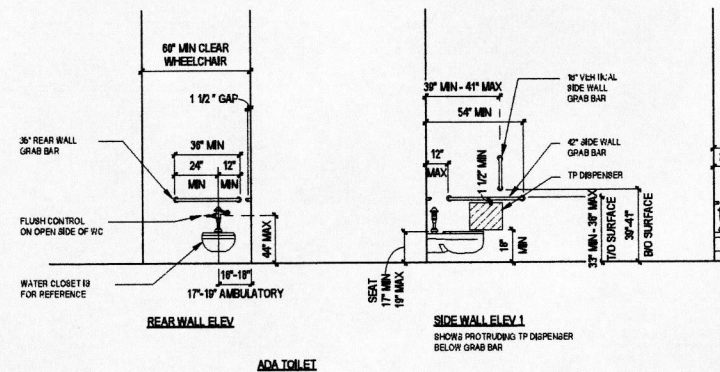
- 1 NEW HOPE PLASTIC TOILET PARTITION (BASIS OF DESIGN: HINEY HIDERS)
- 2A CHILD SIZE TOILET
- 2B ADA COMPLIANT TOILET
- 3 REUSE EXISTING OVERSIZED MASONRY LINTEL
- 4 NEW VCT FLOORING
- 5 NEW 3'-0" X 7'-0" FLUSH WOOD (MD) DOOR IN 2" W. HM FRAME; PROVIDE LEVER-TYPE PRIVACY LOCKSET AND CLOSER
- 7 NEW BASEBOARD HEATER
- 8 ADA DROP-IN SINK IN PLASTIC LAMINATE (PLAM) VANITY UNIT; TOP OF SINK RIM @ 2'-10" AFF MAX; REFER TO ADDITIONAL DIMENSIONS THIS SHEET
- 9 ROOM SIGNAGE - SEE TYPES THIS SHEET
- 10 VANITY SINK UNIT



7 VANITY SINK DETAILS
A101 SCALE: 1/2" = 1'-0"

NUMBERED TOILET ACCESSORIES NOTES

#	DESCRIPTION	MOUNTING HEIGHTS	REMARKS
A	GRAB BAR - SIDE WALL	33" MIN TO 36" MAX TO TOP OF GRIPPING SURFACE, 12" MAX FROM REAR WALL TO CENTERLINE OF GRAB BAR	1 1/2" DIA WITH PEENED GF MOUNTING
B	GRAB BAR - REAR WALL	33" MIN TO 36" MAX TO TOP OF GRIPPING SURFACE, 6" FROM SIDE WALL TO CENTERLINE OF GRAB BAR	1 1/2" DIA WITH PEENED GF MOUNTING
C	GRAB BAR - SIDE WALL VERTICAL	33" MIN TO 41" MAX AFF TO BOTTOM OF GRIPPING SURFACE, 30" MIN TO 41" MAX FROM REAR WALL TO CENTERLINE OF GRAB BAR	1 1/2" DIA WITH PEENED GF MOUNTING
D	TOILET PAPER DISPENSER	OUTLET WITHIN SHADED AREA - ACCESSIBLE MOUNTING HEIGHTS - THIS SHEET	
E	GLASS MIRROR	40" AFF MAX TO BOTTOM OF REFLECTIVE SURFACE	CHANNEL FRAMED/TEMPERED
K	SURFACE MOUNTED ROBE HOOK	40" MAX TO CENTERLINE AFF	VERIFY MOUNTING LOCATION
L	BABY CHANGING STATION	34" MIN TO 48" MAX TO TOP OF HIGHEST OPERABLE PART	



ACCESSIBLE TOILET FIXTURE AND ACCESSORY MOUNTING HEIGHTS