

---

## CHURCH INFORMATION

---

1606 Norma St., State College, PA 16801; (814) 234-2039

[www.universitymennonite.org](http://www.universitymennonite.org)

Pastor: Kate Heinzl

**Submissions for bulletin:** [bulletin@universitymennonite.org](mailto:bulletin@universitymennonite.org)

Deadline for bulletin inclusion: Thursday end of day

### Staff and volunteer leadership

Pastor: Kate Heinzl, [kate@universitymennonite.org](mailto:kate@universitymennonite.org) 717-606-2909

Worship coordinator:

Ben Wideman, [ben.wideman@gmail.com](mailto:ben.wideman@gmail.com) 215-859-0037

Elders:

Faith King, [faithy33@gmail.com](mailto:faithy33@gmail.com) 814-571-5666

Doug Miller, [douglasalanmiller@gmail.com](mailto:douglasalanmiller@gmail.com) 814-883-1127

Doug Yoder, [dv83yoder@gmail.com](mailto:dv83yoder@gmail.com) 814-933-6896

Cong. chair: Joel Weidner, [joelpsu82@outlook.com](mailto:joelpsu82@outlook.com) 814-777-4494

Asst. chair: Tim Groff, [tgroff@centreconcrete.com](mailto:tgroff@centreconcrete.com) 814-360-1086

Treasurer: Jim Rosenberger, [jrosenberger@gmail.com](mailto:jrosenberger@gmail.com) 814-234-2167

Leadership Team: [umc-lt@googlegroups.com](mailto:umc-lt@googlegroups.com)

Elders: [umc-elders@googlegroups.com](mailto:umc-elders@googlegroups.com)

---

**University Mennonite Church's safe-child policy** demonstrates our commitment to the physical safety and the spiritual growth of all our children and youth, ages birth to 18, as well as to our volunteers who care for them. The complete policy is posted in the lobby entrances and in the nursery room.

**Our church maintains a Google Group email list to keep members informed about prayer requests and happenings in the community.** Find out more and request to join at <https://universitymennonite.org/email-sharing-list/>

**Our church has an online directory with photos and contact information.**

Find out more and request to join at:

<https://universitymennonite.org/directory/>

Sign up to receive **Pastor Kate's midweek email newsletter** at:

<http://eepurl.com/gtOJur>

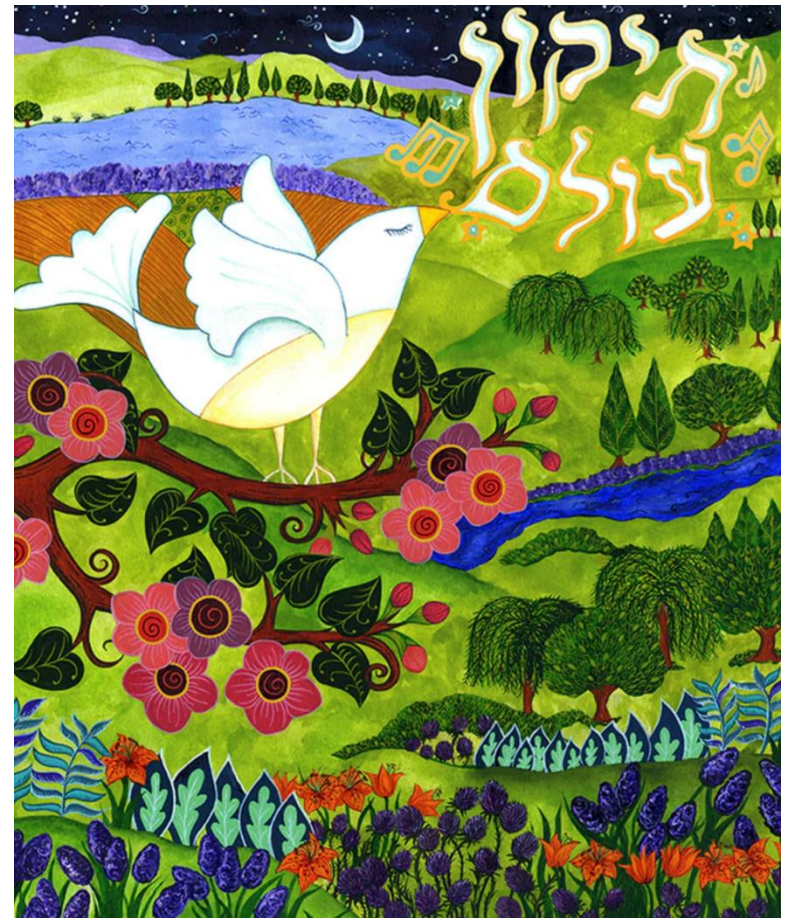
**Missed worship?** Our church services are being recorded and published on our website at: <http://www.universitymennonite.org/worship-service-recordings-current/>

**Church calendar** <https://universitymennonite.org/calendar/>

**Church Wi-Fi information** – Connect to **umc**, password **mennosimons**



**Sunday Worship**  
**April 14, 2024, 10 am**



Artwork by Karla Gudeon

---

Worship Leader: Rick Stehouwer                      Accompanist: Becky Kephart  
Song Leader: Jim Rosenberger

---

### ORDER OF WORSHIP

**Welcome and prayer** – Rick Stehouwer

**Prelude** – *For the Bread and Come Pouring In*  
from The Soil and the Seed Project

**Call to worship** – from Psalm 112

**Lighting the peace lamp**

**Scripture 1** – Luke 24:36-48, read by Ieva Perkons

**Singing** – *In the Bulb There is a Flower*, VT 670

**Scripture 2** - Acts 3:12-19, read by Ieva Perkons

**Singing to call children forward**, *Come and See*, VT 282

**Children's time** – Meredith Wideman

**Singing** – *Lead Me, Guide Me*, VT 601

**Sermon** – Pastor Kate, *Tikkun Olam*

**Special music** – *I Bind My Heart This Tide*, VT 556, by Becky Kephart

**Sharing time** – Pastor Kate

**Singing** – *Healer of Our Every Ill*, VT 644

**Announcements/birthdays/anniversaries/introduction of visitors**

**Benediction**

---

### Announcements

---

**MASKING SPACE** - The back three benches on the left side of the sanctuary are reserved for those who wish to mask in an area where others are also masking. ***This does not mean that everyone who masks must sit in this area;*** rather, it allows for those who want to mask and to maintain some distance from those who are unmasked to sit in one place.

**Children in UMC worship** – Children through sixth grade are invited to come to the front of the sanctuary for children's time. After children's time, the nursery is available for children ages four and under. (Parents, please check to see if the nursery is staffed; if not, please stay with your child.) Children of all ages are also welcome to remain in the sanctuary for the service or to gather at the table in the back for quiet activities using the materials provided.

---

### Announcements (cont.)

---

**Coming up** - Check out the church calendar for more details

<https://universitymennonite.org/calendar/>

Apr 15, 5 pm - Lights & prayers for peace in Gaza and Israel, Allen St. Gates

Apr 16, 12 pm – Lectio Divina, Zoom

Apr 21, 10 am – Joint worship with Albright-Bethune Church

11:30 am – potluck meal in the fellowship hall with our guests

Apr 22, 7 pm – Sacred Harp singing, foyer

Apr 23, 12 pm – Lectio Divina, Zoom

Apr 25, 7 am – Men's fellowship breakfast, Waffle Shop, 364 E College Ave

Apr 28, 10 am – Katie Ruth, exec dir of PAIPL, brings our morning message and will stay during the Christian Ed hour

**Support Interfaith Human Services at a fundraising dinner** on Wednesday, April 17, 5-7 pm at the State College Friends Meeting, 611 East Prospect Ave.

**Check out movie nights at University Baptist and Brethren Church**

Friday, April 19, 7 pm: ***No Way Home***. A documentary about life in prison without parole, focused on the story of one family from Philadelphia. Sponsored by PA United.

Sunday, April 21, 6 pm: ***Common Ground*** unveils a dark web of money, power, and politics behind our broken food system. The film reveals how unjust practices forged our current farm system in which farmers of all colors are literally dying to feed us. The film profiles a hopeful and uplifting movement of white, black, and indigenous farmers who are using alternative “regenerative” models of agriculture that could balance the climate, save our health, and stabilize America's economy – before it's too late.

**Worship & Fine Arts Day Camp** with Dr. Michael Burkhardt, June 24-27 – for children entering grades 2-8 this fall. Camp runs daily from 9 am-3 pm at Grace Lutheran Church, 205 S. Garner Street, State College. The camp offers unique opportunities for children in the Centre Region to create, drum, ring, sing, and grow in a safe, welcoming environment. Learn more and register at <https://www.glcpa.org/grace-music-camp>

**PSU PATHWAYS** English learning program (who use our building) is looking for tutors to work 1:1 with those looking to improve their English skills. Contact Shannon Frey for more information: [ssf124@psu.edu](mailto:ssf124@psu.edu)

---

### Announcements (cont.)

---

**MC USA News - Mennonite Mission Network** invites you to support God's peacemaking work throughout the world. When you give to Mennonite Mission Network on April 16, you engage with peacemakers on six continents, as they realize their God-given callings to ministry. Donate at <https://www.mennonitemission.net/donate>

**Check out the latest issue of PeaceMail**, MC USA's weekly newsletter to learn more about what's happening in the broader church. Online at <https://mailchi.mp/mennoniteusa/peacemail-april-10?e=194dc5d782>

**Need help?** We are a community with talents, tools, and a willingness to serve each other. If you need help - gathering groceries, yard work, etc. - let Kate know. There are some here who might be able to lend a hand.

**Your offerings support UMC** – Remember to support UMC with your financial gifts. Offering baskets are by the doors to the sanctuary or you can make your offering the following ways:

- Mail a check to our treasurer, 1606 Norma Street, State College PA, 16801
- Donate on the church website at <http://www.universitymennonite.org/donate>
- Set up an automatic payment with your bank (bill pay service)
- Use a service like Zelle <https://www.zellepay.com/>

---

### Announcements (cont.)

---

**MC USA News - Mennonite Mission Network** invites you to support God's peacemaking work throughout the world. When you give to Mennonite Mission Network on April 16, you engage with peacemakers on six continents, as they realize their God-given callings to ministry. Donate at <https://www.mennonitemission.net/donate>

**Check out the latest issue of PeaceMail**, MC USA's weekly newsletter to learn more about what's happening in the broader church. Online at <https://mailchi.mp/mennoniteusa/peacemail-april-10?e=194dc5d782>

**Need help?** We are a community with talents, tools, and a willingness to serve each other. If you need help - gathering groceries, yard work, etc. - let Kate know. There are some here who might be able to lend a hand.

**Your offerings support UMC** – Remember to support UMC with your financial gifts. Offering baskets are by the doors to the sanctuary or you can make your offering the following ways:

- Mail a check to our treasurer, 1606 Norma Street, State College PA, 16801
- Donate on the church website at <http://www.universitymennonite.org/donate>
- Set up an automatic payment with your bank (bill pay service)
- Use a service like Zelle <https://www.zellepay.com/>